



HORIZON EUROPE at Leeds

The Horizon Europe Framework Programme for Research and Innovation is the European Commission's main mechanism for funding research and innovation. It is a 7-year programme (2021-2027) which offers grants through open and competitive calls for a variety of activities from individual fellowships to large-scale, multi-partner research.

This brochure focuses on 5 Horizon Europe key schemes for which the EU Team can offer you full support:

- **Marie Skłodowska-Curie Postdoctoral Fellowships (MSCA-PFs)** fund 2-year Fellowships for researchers moving within or outside the EU and Associated Countries
- **Marie Skłodowska-Curie Doctoral Networks (MSCA-DNs)** establish doctoral training networks
- **European Research Council (ERC) Grants** promote PI-led, paradigm-shift research
- **Global Challenges & European Industrial Competitiveness** calls (under the 6 clusters) fund policy or industry-led collaborative research
- **European Innovative Council (EIC)** supports game changing innovation projects throughout the lifecycle, from early stage research to market and scale-up

Horizon Europe key schemes



Pillar 1
Excellent Science

European Research Council

Marie Skłodowska-Curie
Actions



Pillar 2
Global Challenges and
European Industrial
Competitiveness

Clusters

- Health
- Culture, Creativity and Inclusive Society
- Civil Security for Society
- Digital, Industry and Space
- Climate, Energy and Mobility
- Food, Bioeconomy, Natural Resources, Agriculture and Environment



Pillar 3
Innovative Europe

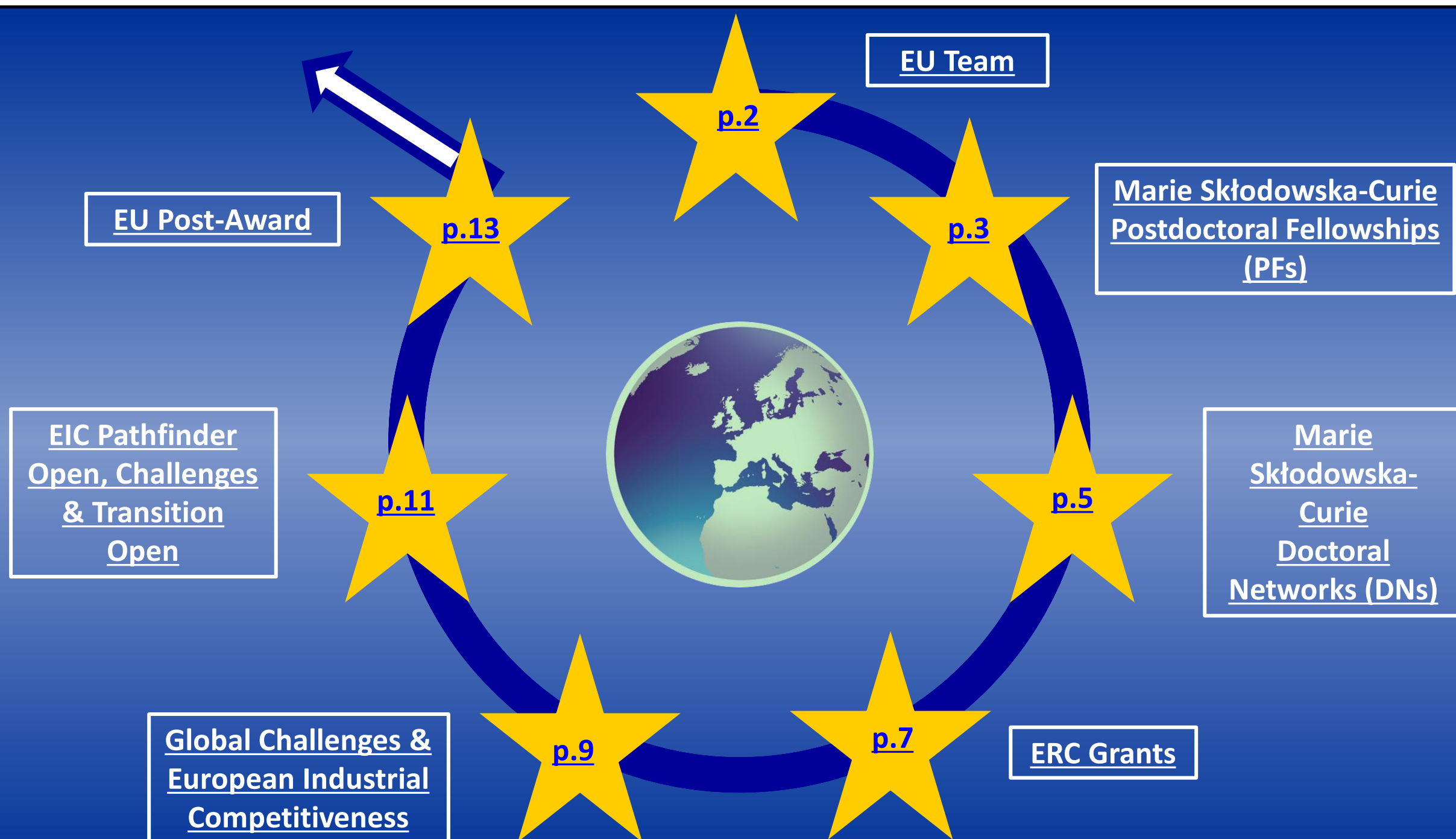
European Innovation Council

- EIC Pathfinder
- EIC Challenges
- EIC Transition Open

Horizon Europe & UK Participation after Brexit

The UK has [finally Associated to Horizon Europe](#)! This means that the UK will participate under the same terms as Member States for all calls falling under the 2024 Work Programmes and onwards (with the exception of the EIC Accelerator scheme, which was excluded from the Association Agreement within the Brexit Deal).

Important note: For the calls described in this version of the brochure, [only the ERC and MSCA Postdoctoral Fellowship deadlines are part of the 2024 Work Programme](#). The UK still remains eligible for all other deadlines in 2023, but participation will be funded via the UKRI Guarantee Fund as in previous years. This has now been extended to cover [all calls under the 2023 Work Programme](#).





		AHC	ENV	EPS (ENG)	EPS (MAPS)	FBS	FMH	FSS	LUBS
Pre-award	Ben Williams	ERC							
	Cigdem Tasci Tochniti								
	Su Laithwaite								
	Jess Clarke								
Post-award	Keri Dunning								
	Martika Cawley								
EU Team	General Enquiries: EUFunding@leeds.ac.uk								



Marie Skłodowska Curie Actions (MSCA) Postdoctoral Fellowships (PF)

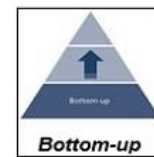
WHAT IS THE SCHEME ABOUT?

- Individual **career development/knowledge transfer** fellowships for **Postdoctoral researchers**
- Funds a research/training project that incorporates international mobility for researchers who have obtained a **PhD** or successfully defended their doctoral thesis and have a **maximum of 8 years full-time equivalent research experience**
- Postdoctoral Fellowships have two funding strands:
 - European Fellowship (EF)** for researchers of any nationality to undertake a fellowship within an EU Member State (MS) or Associated Country (AC).
 - Global Fellowship (GF)** for researchers meeting specific nationality/residency criteria, to spend 12-24 months in a non-associated Third Country, followed by a mandatory 12 months period in an EU Member State or AC.

Next
deadline

[11 September 2024](#)

MAIN CHARACTERISTICS



Unit cost budget funds:

- Living allowance** (€5080/month subject to country correction coefficient)
- Mobility allowance** (€600/month)
- Family allowance** (€660/month if eligible to claim)
- Long-term Leave Allowance** (EUR 5 680 x % covered by the beneficiary if eligible to claim)
- Special Needs Allowance** (Requested unit x 1/number of months if eligible to claim)
- Research, training & networking costs** (€1000/month)
- Management & indirect costs** (€650/month)



EF: 12-24 months
GF: 24-36 months



EF: €220-237K
GF: €286-310K

EU Team contact: eufunding@leeds.ac.uk

5. WHY YOU SHOULD APPLY

In 2020 Leeds had a success rate of 18.6% (compared to overall scheme success rate of 14%). These fellowships allow you to gain experience of EU funding and are 100% funded.

As supervisor:

- Offers opportunity to bring high quality researchers to Leeds
- Opens up collaboration opportunities

As Researcher:

- Transnational mobility
- Can focus 100% on research & training project
- Undertake career development training

4. WHAT MAKES A COMPETITIVE PROPOSAL?

Proposals need to satisfy the following criteria:

- High quality researcher relative to career stage
- Potential to deliver long term impact on researcher's career
- Significant EU/global level research impact
- Balanced combination of research and complementary skills training
- High quality supervisor and host organisation
- 2-way knowledge transfer opportunities

3. APPLICATION PROCESS

- Single stage electronic submission process
- 10 page application
- Resubmission restriction for proposals receiving a score of less than 70%

1. PROJECT IDEA

Project based on **any area of research** that moves forward the state-of-the-art in the field and provides:

- Research skills and knowledge training
- Complementary, career development skills training
- Knowledge transfer collaboration & networking opportunities

2. ELIGIBILITY CRITERIA

At the call deadline, the Postdoctoral Researcher must:

- Have a **PhD** or successfully defended their doctoral thesis
- Have a **maximum of 8 years** full-time equivalent research experience at the call deadline
- Meet mobility criteria: not have lived/worked in the country that hosts the fellowship for more than 12 months in the 36 months prior to the call deadline



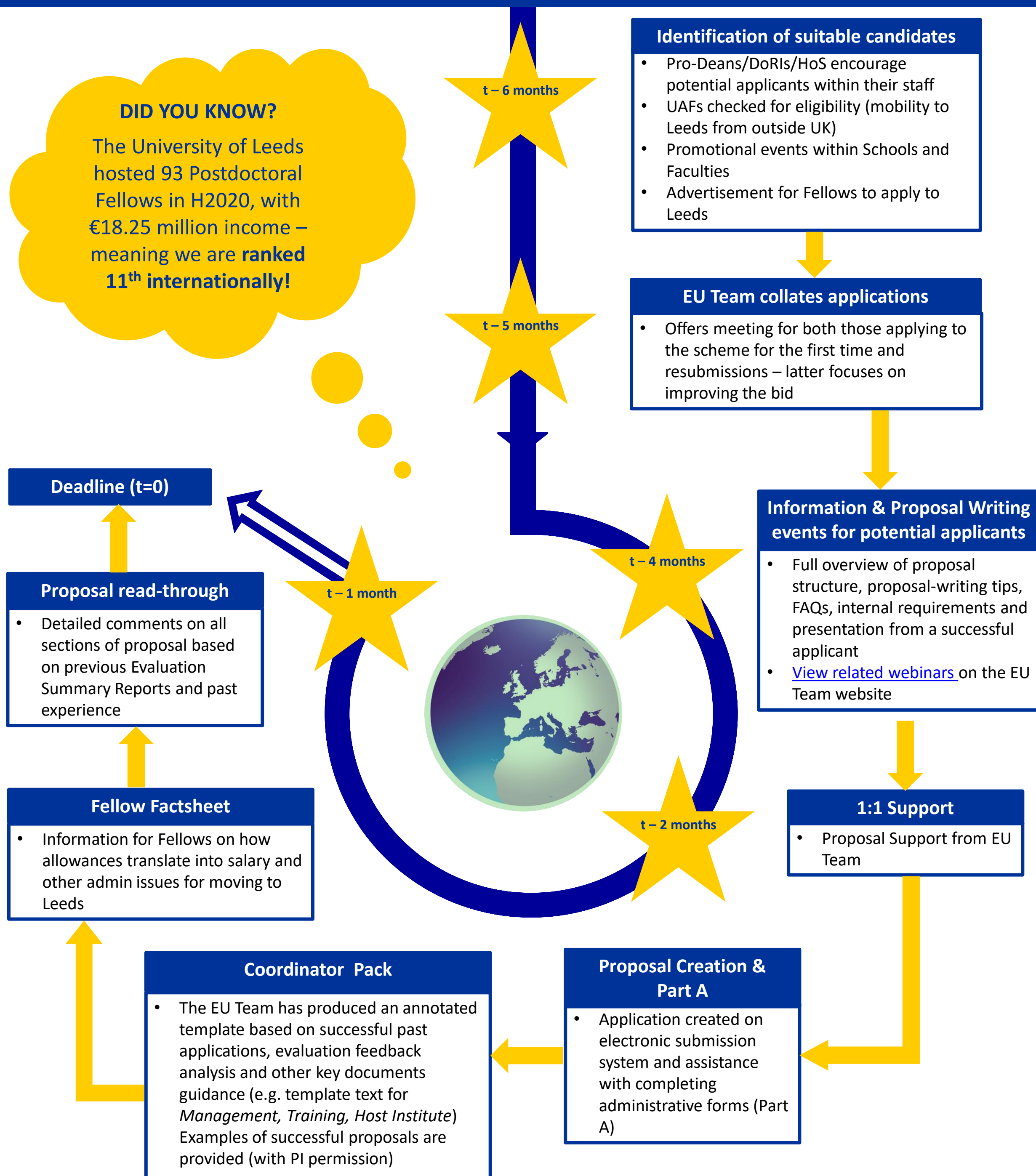


MSCA POSTDOCTORAL FELLOWSHIPS SUPPORT

EU TEAM SUPPORT & TIMELINE

DID YOU KNOW?

The University of Leeds hosted 93 Postdoctoral Fellows in H2020, with €18.25 million income – meaning we are **ranked 11th internationally!**





Marie Skłodowska Curie Actions (MSCA) Doctoral Networks (DN)

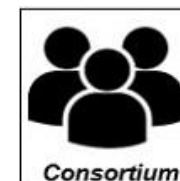
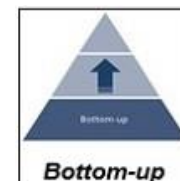
WHAT IS THE SCHEME ABOUT?

- Delivering research and complementary skills training for **doctoral candidates** (i.e. not already in possession of a doctoral degree at the date of the recruitment) within **international, interdisciplinary and inter-sectoral networks** that utilise/trial novel training delivery methods and mechanisms
- Leads to improved employability and career prospects for researchers within and outside academia
- Funds training for researchers of their research career via one of 3 network models:
 - Doctoral Networks (DN)**
 - Industrial Doctorates (DN-ID)**
 - Joint Doctorates (DN-JD)** (Leeds cannot apply for 2023 JD)

Next
deadline

28 November 2023

MAIN CHARACTERISTICS:



Unit cost budget funds:

- Supported Researchers (SRs) living, mobility & family allowance** (average €4860/person/month)
- Research, training & networking costs** (€1,600/person/month)
- Management & indirect costs** (€1,200/person/month)
- Standard Network: Up to 360 person months (10 SRs)
- Joint/Industrial Doctorate: Up to 540 person months (15 SRs)



48 months



Standard: €2.5 – 3 m
DN-ID: €3.7 - 4.5 m
DN-JD: €3.7 - 4.5 m

EU Team contact: eufunding@leeds.ac.uk

5. WHY YOU SHOULD APPLY

- Funds PhD students:** potentially up to 5 per organisation (ID/JD)
- Budget based on unit costs** - one of the easier EU funding streams to administer
- Helps **develop international, intersectoral, collaborative networks/contacts**
- Under Horizon 2020, Leeds is:
 - beneficiary in 30 ITN projects
 - coordinating 13 ITN projects
 - ranked 2nd in the UK for number of coordinated ITNs

4. WHAT MAKES A COMPETITIVE PROPOSAL?

- Meaningful participation of non-academic sector
- Use of innovative training delivery methods
- Interdisciplinary/intersectoral secondment opportunities
- Significant EU/global level research impact
- Balanced combination of research & complementary skills training delivered by top quality organisations/individuals

3. APPLICATION PROCESS

- Single stage electronic submission
- 30 page application
- Resubmission restriction for proposals receiving a score of less than 80%

1. PROJECT IDEA

Innovative doctoral training network based on **any area of research** that moves forward the state-of-the-art in the field and fosters a culture of **open science, innovation & entrepreneurship** within a new generation of researchers

2. ELIGIBILITY CRITERIA

- All models:** Minimum of 3 organisations based in 3 different EU Member States (MS) or Associated Countries (AC). At least one must be from a MS.
- DN-ID:** At least one beneficiary must be from the academic sector and one from the non-academic sector. Researchers must spend min. 50% of their time seconded to non-academic sector organisation
- DN-JD:** At least **three independent legal entities** must be entitled to award doctoral degrees (**at least two of them** must be established in MS and/or AC)

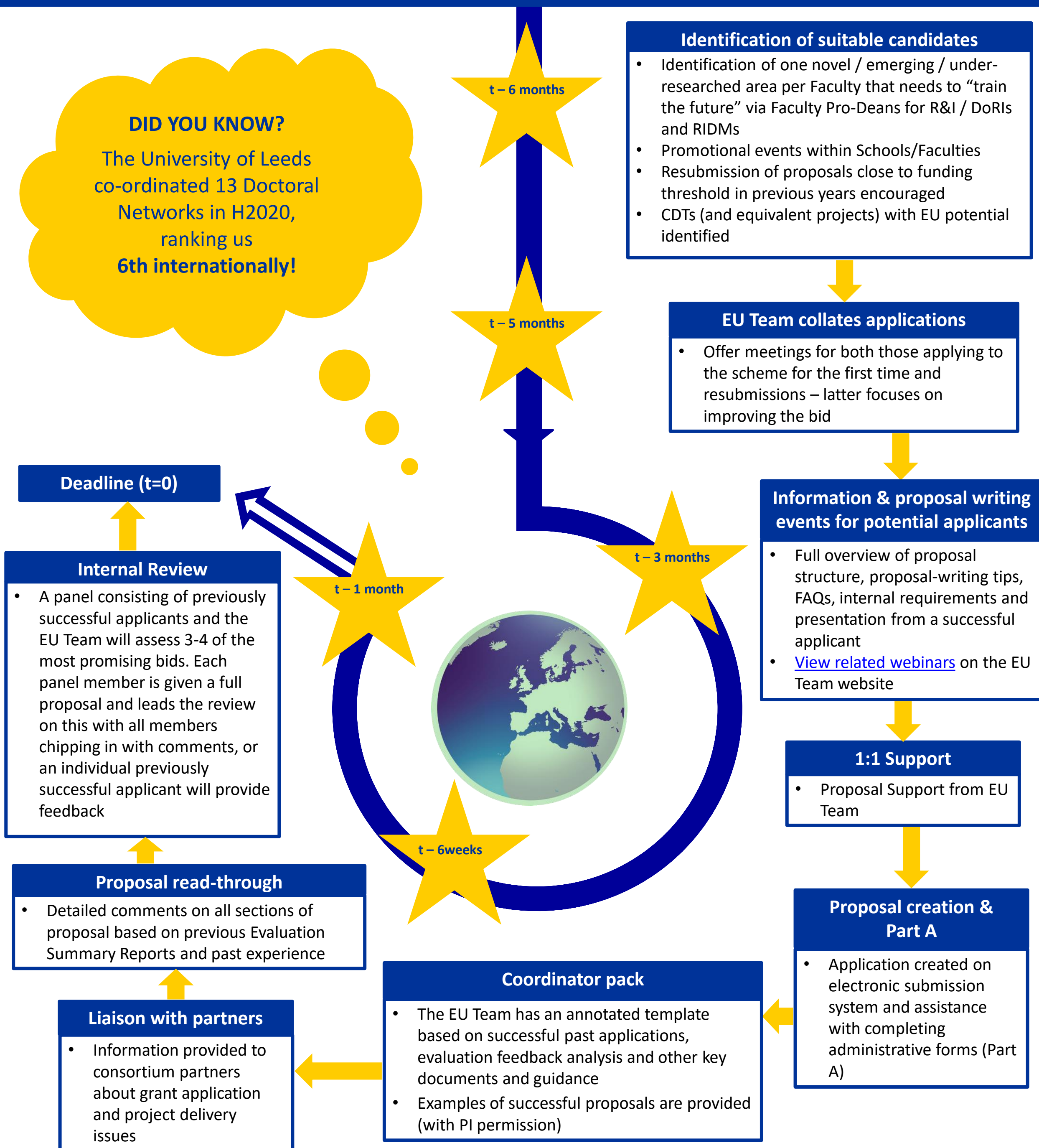


MSCA DOCTORAL NETWORKS SUPPORT

EU TEAM SUPPORT & TIMELINE

DID YOU KNOW?

The University of Leeds
co-ordinated 13 Doctoral
Networks in H2020,
ranking us
6th internationally!





Horizon
Europe



UNIVERSITY OF LEEDS

ERC FACTSHEET

FELLOWSHIPS FOR FRONTIER RESEARCH

WHAT IS THE SCHEME ABOUT?

The ERC is looking to fund:

- Ambitious, paradigm shift research
- Highly rated Principal Investigators (PIs) in 3 categories:
Starting Grants: 2-7 years post-PhD
Consolidator Grants: 7-12 years post-PhD
Advanced Grants: >12 years but usually professorial

ERC grants are:

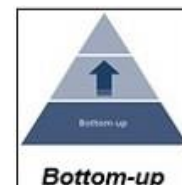
- Bottom-up, PI-led research
- Impact is solely on advancing research knowledge
- Step-change to the state-of-the-art
- A research team, led by the PI and his/her research vision

Next deadlines

Starting: [24 October 2023](#)
Consolidator: [12 December 2023](#)
Advanced: [August 2024 \(tbc\)](#)

Watch the
[ERC video](#)

MAIN CHARACTERISTICS



Bottom-up



Single Team



Step-change

The ERC is not looking for collaborations: all bids must be a single team with the PI leading the vision. The team can:

- comprise other academic staff but if more senior than the PI, they must not be seen to be providing leadership.
- be based at other institutions, but they are not collaborators, they are 'remote team members'

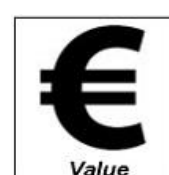
Budget (+possible extra €1m for large equipment/facilities access):

- **Starting Grants:** up to €1.5m over 5 years *pro rata*
- **Consolidator Grants:** up to €2m over 5 years *pro rata*
- **Advanced Grant:** up to €2.5m over 5 years *pro rata*



Duration

typically 5 years



Value

1.5 -2.5 million

EU Team contact: [Ben Williams](#)

5. WHY YOU SHOULD APPLY

- ERC allows you to design the research you want to do
- You can build a team of post-docs, PhDs etc.
- Flexibility in work plan and budget as project progresses
- Career-defining fellowships

4. WHAT MAKES A COMPETITIVE PROPOSAL

- Strong PI track record
- High risk-high reward research
- Ambitious research based on feasible reasoning
- Novel or unconventional methodology

3. APPLICATION PROCESS

- One-stage submission, two-stage evaluation
- Two sections:
 - B1 - Synopsis, CV, Track Record (10 pages)
 - B2 - Full proposal (15 pages)
- Interview as part of stage 2 for all schemes
- Can only reapply next year if get to Stage 2
- Resubmission restrictions if you score:
'B' (1 year) or 'C' (2 years) at Stage 1

1. PROJECT IDEA

- Any area except nuclear research
- Must provide a **step-change** to current state of knowledge

2. ELIGIBILITY CRITERIA

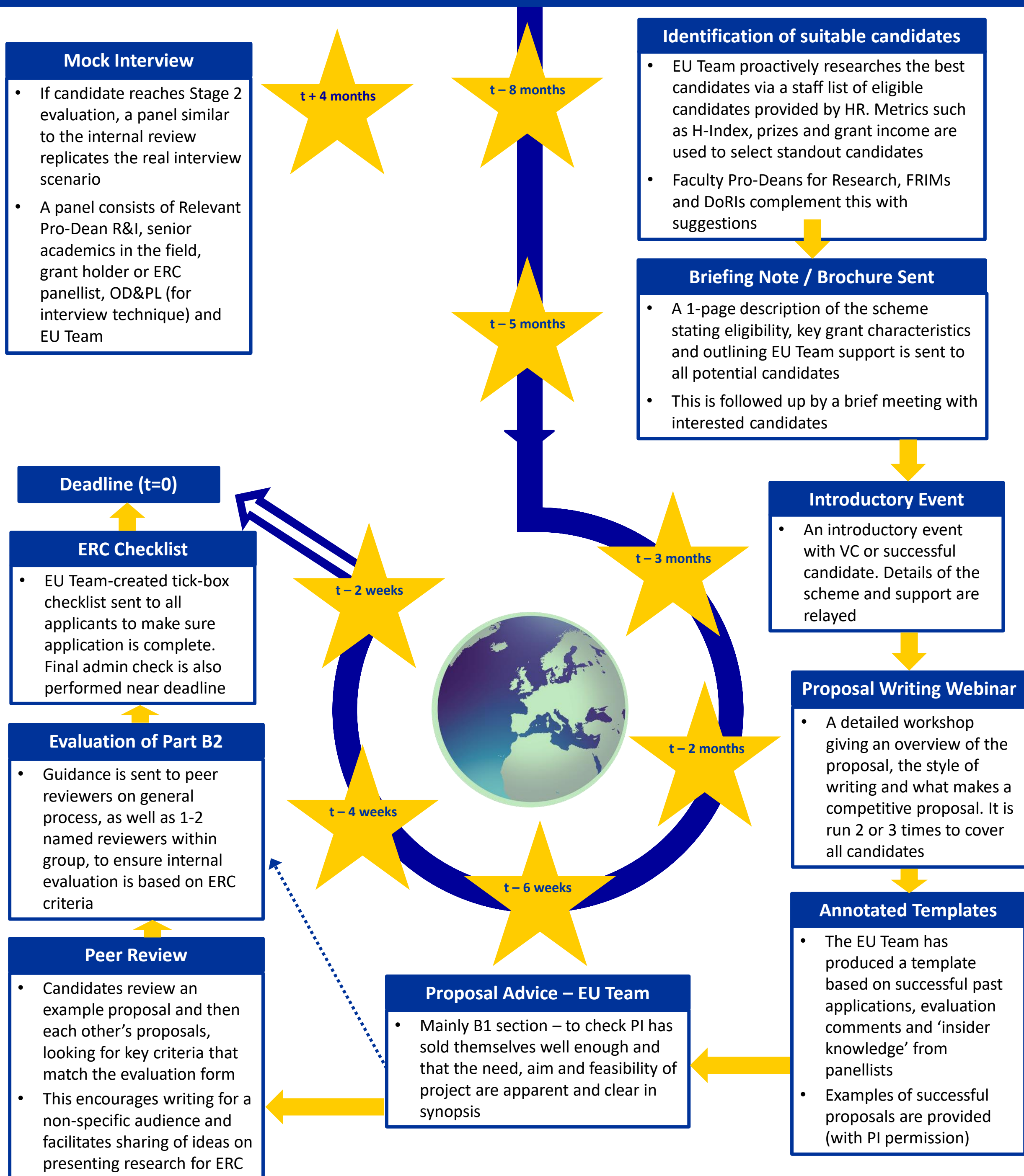
- Eligibility cut-off 1st Jan each year to determine category
- Date on PhD certificate used against this
- Must carry out at least 50% research in EU
- Must allocate a minimum amount of time to grant:
 - **Starter:** min. 50% each year
 - **Consolidator:** min. 40% each year
 - **Advanced:** min. 30% each year





ERC SUPPORT

EU TEAM SUPPORT & TIMELINE





Global Challenges & European Industrial Competitiveness

Policy or industry-led collaborative research

WHAT IS THE SCHEME ABOUT?

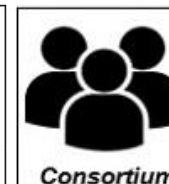
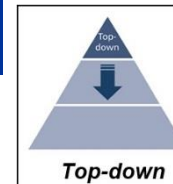
Collaborative projects to address Global Challenges in 6 Clusters:

- Cluster 1 [Health](#)
- Cluster 2 [Culture, Creativity and Inclusive Society](#)
- Cluster 3 [Civil Security for Society](#)
- Cluster 4 [Digital, Industry and Space](#)
- Cluster 5 [Climate, Energy and Mobility](#)
- Cluster 6 [Food, Bioeconomy, Natural Resources, Agriculture & Environment](#)

Next
deadline

[Throughout the year](#)

MAIN CHARACTERISTICS



Funding for collaborative projects via:

- **Research & Innovation Actions (RIAs)**
- **Innovation Actions (IAs)**
Call topics are positioned along the scale from research to market, with a strong focus on **innovation-related** activities, such as pilots and demonstrations.
- **Coordination and Support Actions (CSA)** fund accompanying activities such as networking, road mapping, training and capacity building and policy/advisory work.



3-5 years



Typically 4-6, up to 15 million

EU Team contact: eufunding@leeds.ac.uk

5. WHY YOU SHOULD APPLY

Opportunities to/for:

- be either **partner** or **coordinator** depending on experience
- be part of an interdisciplinary and international consortium
- develop **solutions for Europe's biggest societal challenges**
- form or strengthen existing links with **non-academic partners**
- receive **bespoke support** available from proposal writing through to post-award management

4. WHAT MAKES A COMPETITIVE PROPOSAL

- For RIAs: proposals are evaluated equally on the **'Excellence', 'Impact' and 'Implementation'** sections so careful attention must be given to **all three**
- For IAs: the **Impact** criterion carries a higher weighting
- Clear **end-user engagement** and **real-world application** as well as plans to **exploit and communicate** research outputs to a broad audience
- Commitment to **gender equality, open science and responsible R&I**

1. PROJECT IDEA

- Calls are **top-down**, with specific topics and a list of 'expected impacts' which must be addressed in the proposal
- Typically supports multi-actor approach – multi-discipline and cross-sector approach

2. ELIGIBILITY CRITERIA

- At least 3 partners from 3 different Member State (MS) or Associated Countries with one being based in a MS (occasional exception for CSA projects)
- Third Country partner(s) can participate if necessary and justified but may not be automatically funded (unless a Low and Middle Income Country (LMIC) (excluding BRIC nations and Mexico))

3. APPLICATION PROCESS

- Deadlines throughout the year depending on the calls
- Submissions either 1- or 2-stage
- Online submission via the Research Participant portal
- 45-page proposal for RIA/IA, 30 for CSA
- 10 pages if first stage of a two-stage proposal





Horizon
Europe



UNIVERSITY OF LEEDS

Global Challenges & European Industrial Competitiveness

Support for Leeds-Coordinated Collaborative Projects

DID YOU KNOW?

The University of Leeds is one of only 53 HEIs across Europe to be participants in more than 100 challenge-based collaborative projects

Circulation of draft Work Programmes

- Most themes have drafts available that outline likely topics for the 2- or 3-year period. These are 90% 'final'

Identification of potential topics

- IPE submissions
- Interest from draft WP requests
- Identification of potential participants by Research & Innovation Development Managers (RIDMs) & EU Team
- Workshops for creating bottom-up projects to address Missions

Information event for potential applicants

- [View related webinars](#) on the EU Team website

Meetings with potentially interested academics

- Coordinator Pack – templates, timeline, wider support

Initial information for potential partners

- Includes tips on a 1-page summary to send out, guide to getting a PIC, information partners will need to provide for Parts A and B

1:1 meetings and translating a topic

- Meet with coordinators around specific project idea, support required and a suggested timeline
- Identify and "translate" key aspects of the call text

Visits from National Contact Points (NCPs)

- All NCPs invited to give presentation on the WP contents and to hold 1-to-1 surgeries with those intending to apply
- Strategic meeting with EU Team and relevant Deans/Pro-Deans for Research

EU Team Support

- Setting up, completing and monitoring proposal account
- **Annotated proposal template** based on:
 - Successful projects
 - Feedback from reviewers and National Contact Point
- Collating partner data for online forms
- Advice on eligibility of costs (actual costing done in Faculty by [FRIO](#))
- Proof-reading and assistance with non-technical proposal writing
- Management diagrams and table completion

Deadline (t=0)

Internal Peer Review

- May already be standard in School/Faculty if bid value exceeds a certain size
- Otherwise EU Team will try to arrange panel comprising successful applicant, EU evaluator and someone with extensive EU experience and internal influence

Finding partners

- Core consortium should be people you know, but missing roles can be filled via our networks e.g. [Crowdhelix](#), [EEN](#)

t – 12 months

t – 5 months

t – 4 months

t – 2 months

t – 3 months





Horizon
Europe



UNIVERSITY OF LEEDS

EIC Pathfinder Open, Challenges & EIC Transition Open

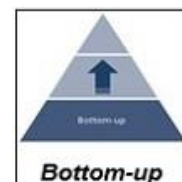
Innovative Research to support market-creating breakthroughs

WHAT IS THE SCHEME ABOUT?

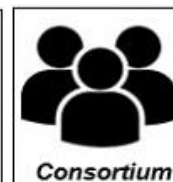
The EIC fosters innovation via radical high risk/high gain or even disruptive tech solutions. It covers the process from early concept to market readiness, though always in the context of a long-term plan to implement a solution.

- **Pathfinder Open:** High risk/high reward tech solutions in any tech area
- **Pathfinder Challenges:** High risk/high reward tech solutions in 5 areas:
 - Awareness Inside
 - Tools to measure and stimulate activity in brain tissue
 - Emerging Technologies in Cell and Gene therapy
 - Novel routes to green hydrogen production
 - Engineered Living Materials
- **Transition open:** Follow-on funding to take a Pathfinder or ERC Proof-of-Concept project towards market readiness

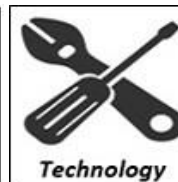
MAIN CHARACTERISTICS



Bottom-up



Consortium

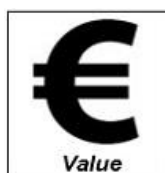


Technology



Duration

Pathfinder Open / Challenges: typically 3 years
Transition Open: 18-24 months



Value

Pathfinder Open c.€3m
Pathfinder Challenges c.€4m
Transition Open €2.5

Next
deadline

Pathfinder Open: **tbc**
Pathfinder Challenges: **18 October 2023**
Transition Open: **tbc**

EU Team contact: eufunding@leeds.ac.uk

WHY YOU SHOULD APPLY

- **Pathfinder:** chance to lead a hi-tech project of your design with a view to future market uptake or **Transition:** chance to develop your results towards commercialisation
- Allows much more risk and ambition than traditional EU schemes
- Smaller consortia (4-6 partners typical)
- Chance to resubmit based on previous feedback, yearly deadlines

WHAT MAKES A PROPOSAL COMPETITIVE

Pathfinder:

- Radical new technological vision, not novel use of existing tech
- Addressing the Gatekeepers : Radical vision; Science-towards-technology breakthrough; High-risk/high-gain, objective-oriented approach & methodology
- Consortium that includes early career researchers & tech SMEs
- Long-term plan for exploitation

Transition:

- Basis in a Pathfinder or ERC PoC project that has generated excellent results
- Clear plan for market uptake

1. PROJECT IDEA

- **Pathfinder:** Radical technological breakthrough or disruptive innovation
- **Transition:** Plan for market-readiness (and longer-term exploitation) based on a successful Pathfinder or ERC Proof of Concept (PoC) project

2. ELIGIBILITY CRITERIA

- **Pathfinder:** Consortia featuring at least 3 partners from 3 different Member States or Associated Countries, with at least 1 partner from a Member State
- **Transition Open:** can also be mono-beneficiary. Must relate to a project that has been live for at least 12 months or has been completed within 24 months as of deadline

3. APPLICATION PROCESS

- Proposal size: **Pathfinder** - 17 page max. ; **Transition** - 25 page max.
- Online submission via the [Funding & Tenders Portal](#)
- Annual deadlines, sometimes >1 per year





Horizon
Europe



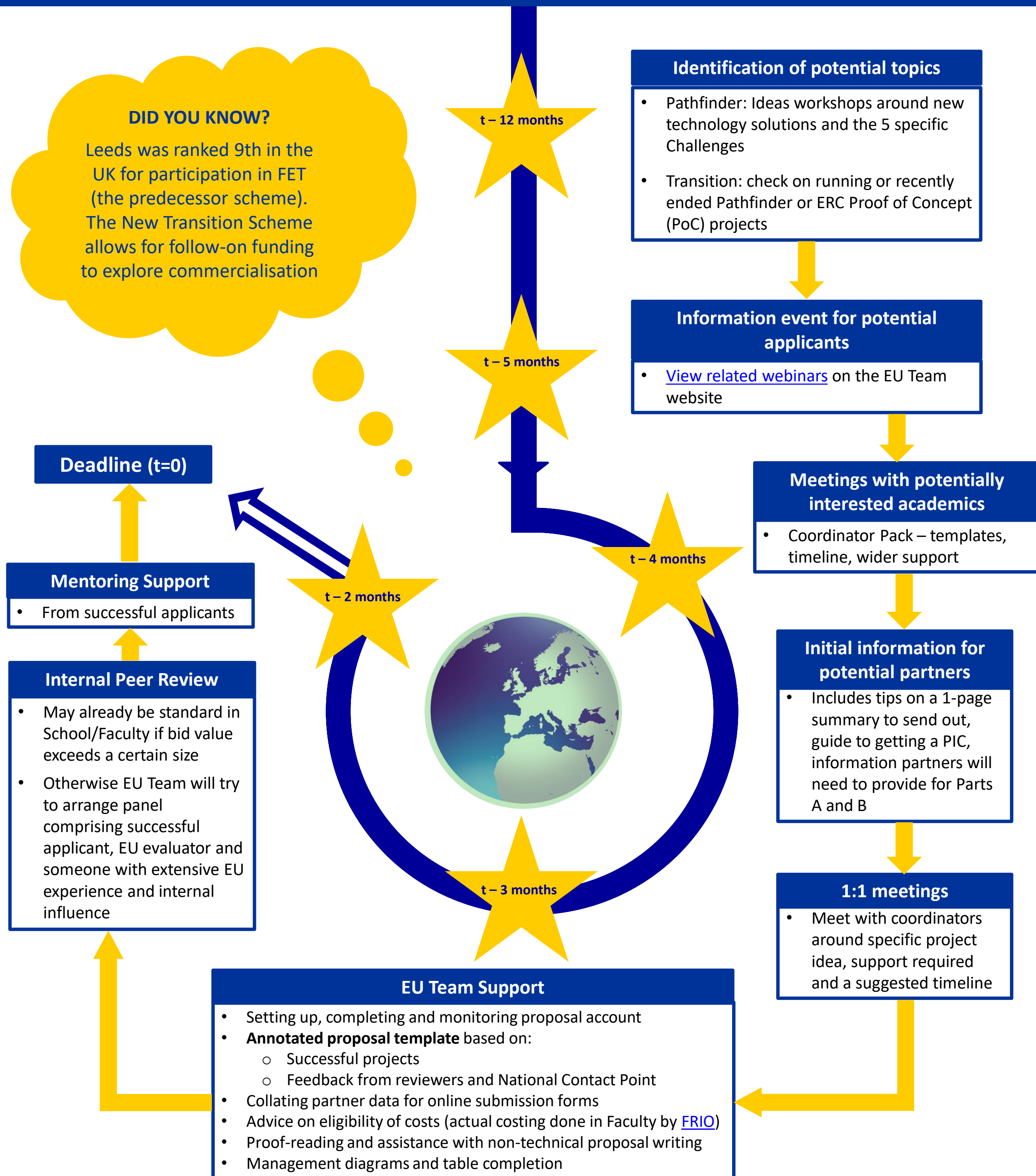
UNIVERSITY OF LEEDS

EIC Pathfinder Open, Challenges & EIC Transition Open

Support for Leeds-Coordinated EIC proposals

DID YOU KNOW?

Leeds was ranked 9th in the UK for participation in FET (the predecessor scheme). The New Transition Scheme allows for follow-on funding to explore commercialisation





EU Post Award

Support available for managing your EC funded project

With the introduction of a another new financial regime in Horizon Europe, it is crucial that the University has the necessary support systems in place to help academics successfully manage their EC funded projects.



Working alongside the EU pre-award team, we provide financial support to academics and Faculty Research and Innovation Offices for the duration of their Horizon Europe project.

We ensure that University systems and processes are compatible with the EC rules and regulations and provide the necessary training to academics and support staff across the University.



MAIN CONTACTS

Keri Dunning K.L.Dunning@leeds.ac.uk

- Supervises EU post award team
- Responsible for post award systems and processes
- Provides training for academic/support staff
- Provides post award support to the following Faculties:
 - ENV
 - EPS (ENG)
 - LUBS

Martika Cawley M.Cawley1@leeds.ac.uk

- Provides post award support to the following Faculties:
- AHC
 - EPS (MAPS)
 - FBS
 - FMH
 - FSS

ADDITIONAL SUPPORT

- Presentation at consortium Kick Off meeting for Leeds-coordinated projects
- Collation of partner financial reports on Leeds-coordinated projects
- Manage audits conducted by the Commission or the European Court of Auditors
- Marie Curie support – exchange rate management, contractual issues, allowance reconciliations
- Grant amendments
- Training for academics and support staff

BUDGETING

- Update KRISTAL phase 2 so budget reports are accurate
- Forecast expected exchange rate gains/losses

REPORTING

- Prepare and submit financial reports
- Arrange and manage external audits
- Support with EC portal - SYGMA

AWARD SET UP

- Support with KRISTAL set up and award approval
- Arrange and chair internal Kick Off meeting
- Allocate project income
- Support for HR with regard to Marie Curie employment contracts

PROJECT MANAGEMENT

- Advice regarding EC rules and regulations and project specific queries
- Guidance documents on completing timesheets and calculating salary costs
- Advice regarding Euro to GBP exchange rates
- Systems and processes guidance
- Close down of project accounts

