

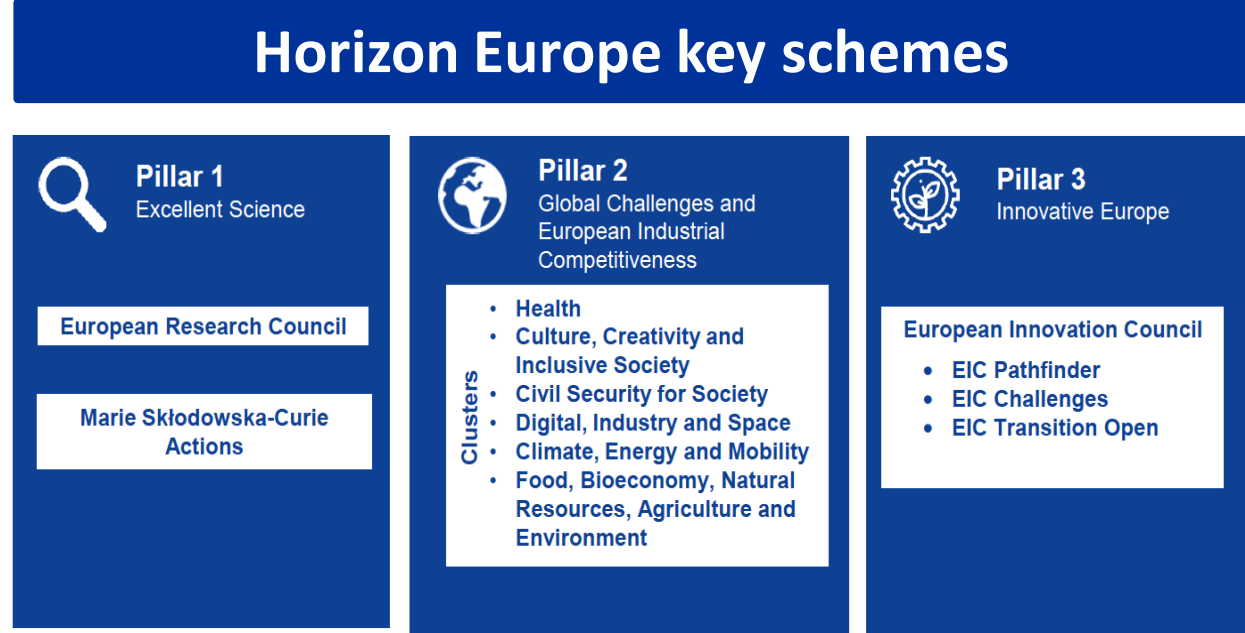


HORIZON EUROPE at Leeds

The Horizon Europe Framework Programme for Research and Innovation is the European Commission's main mechanism for funding research and innovation. It is a 7-year programme (2021-2027) which offers grants through open and competitive calls for a variety of activities from individual fellowships to large-scale, multi-partner research.

This brochure focuses on 5 Horizon Europe key schemes for which the EU Team can offer you full support:

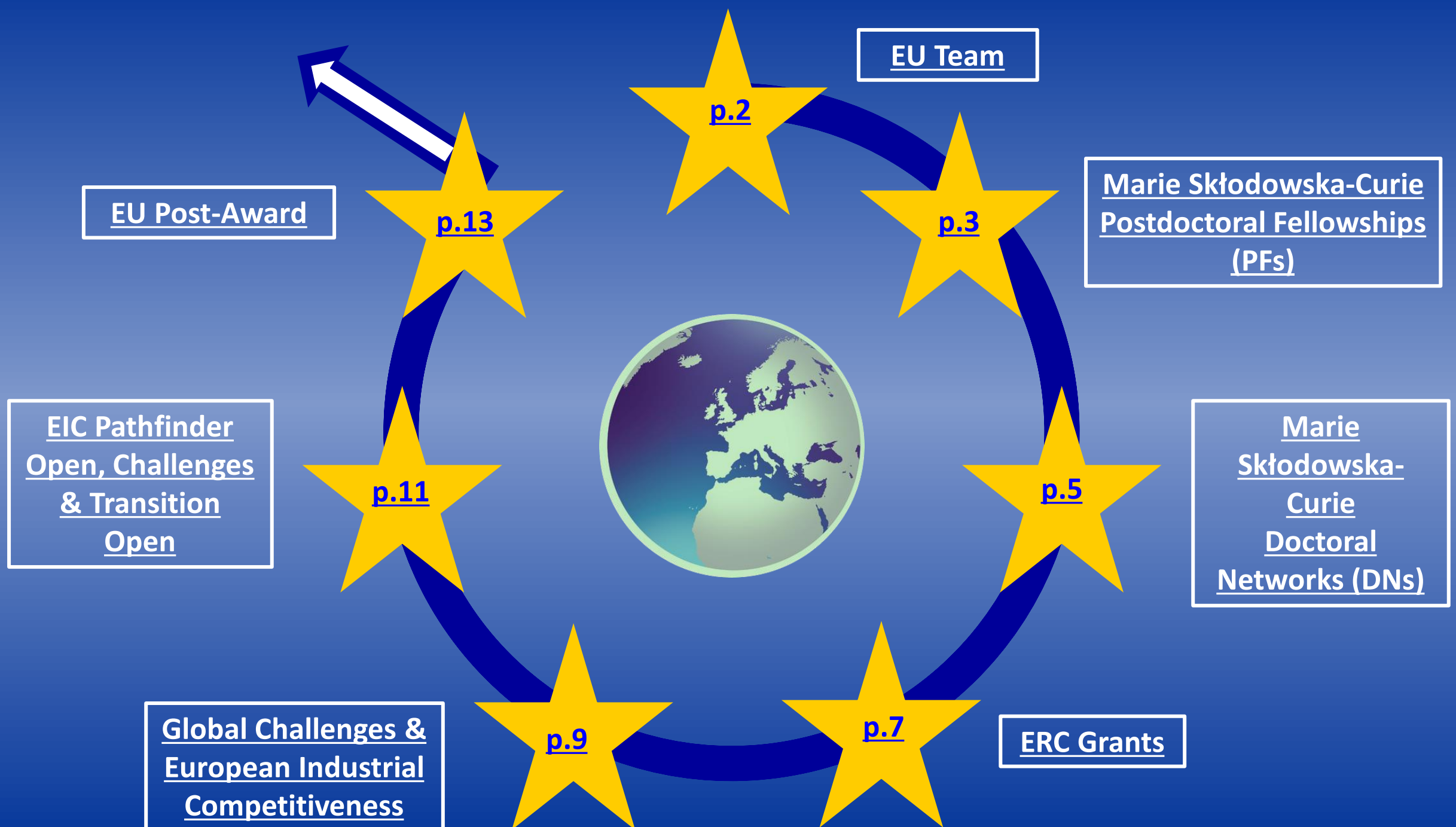
- **Marie Skłodowska-Curie Postdoctoral Fellowships (MSCA-PFs)** fund 2-year Fellowships for researchers moving within or outside the EU and Associated Countries
- **Marie Skłodowska-Curie Doctoral Networks (MSCA-DNs)** establish doctoral training networks
- **European Research Council (ERC) Grants** promote PI-led, paradigm-shift research
- **Global Challenges & European Industrial Competitiveness** calls (under the 6 clusters) fund policy or industry-led collaborative research
- **European Innovative Council (EIC)** supports game changing innovation projects throughout the lifecycle, from early stage research to market and scale-up



Horizon Europe & UK Participation after Brexit

The UK is fully permitted to participate in Horizon Europe as both coordinator and partner, with access on the same terms as an EU Member State (with the exception of the EIC Accelerator scheme, which was excluded from the Association Agreement within the Brexit Deal).

This applies for all calls in the 2024 Work Programme onwards, until the end of the Horizon Europe programme. The University of Leeds can therefore now coordinate (be lead partner) in applications.



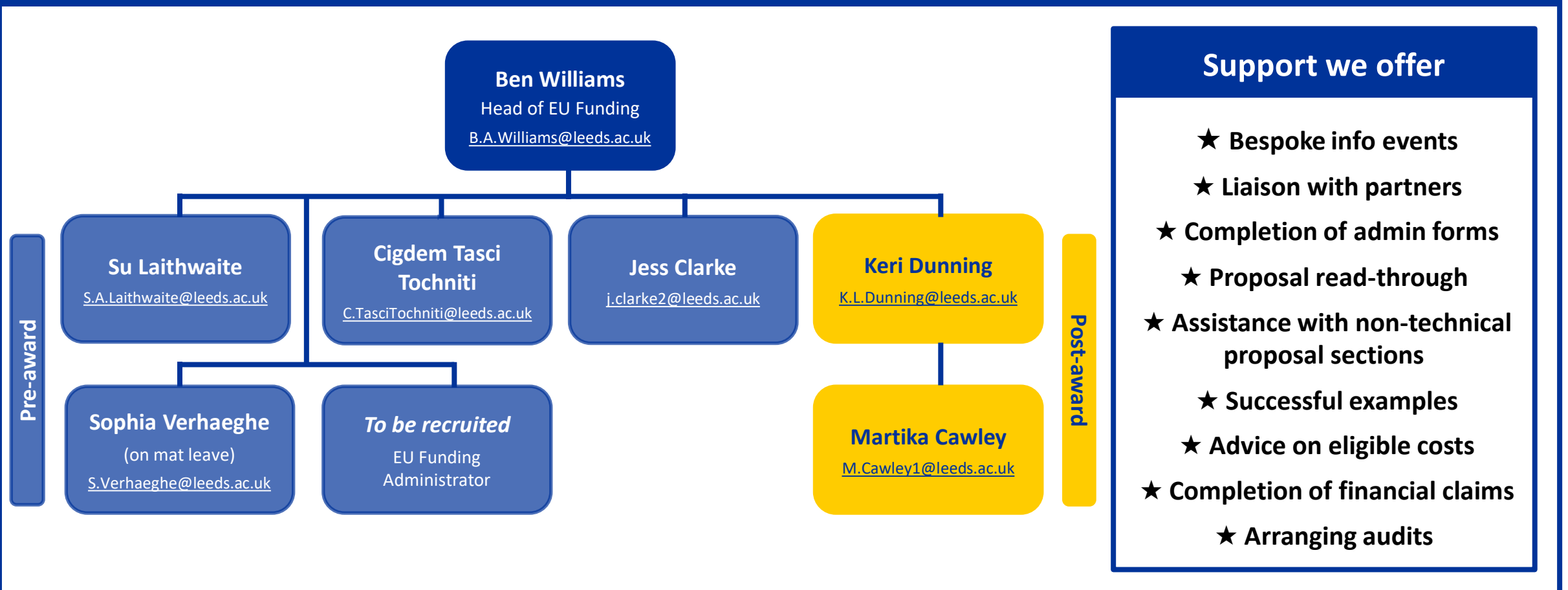


THE EU TEAM

The EU Team can support any Horizon Europe application, though we offer bespoke support packages for 5 key schemes, each described in the following pages:

1. Marie Skłodowska-Curie Postdoctoral Fellowships (PFs)
2. Marie Skłodowska-Curie Doctoral Networks (DNs)
3. ERC Starting, Consolidator & Advanced Grants
4. Leeds-coordinated Collaborative Projects (Global Challenges & European Industrial Competitiveness)
5. EIC Pathfinder, EIC Challenges & EIC Transition Open

Who we are



Who to contact

The EU Team primary contacts are shown in the table below. If you have a general query and are not sure who to contact, you can also email the general email address at EUfunding@leeds.ac.uk.

		AHC	ENV	EPS (ENG)	EPS (MAPS)	FBS	FMH	FSS	LUBS
Pre-award	Ben Williams	ERC							
	Cigdem Tasci Tochniti								
	Su Laithwaite								
	Jess Clarke								
Post-award	Keri Dunning								
	Martika Cawley								
EU Team	General Enquiries: EUfunding@leeds.ac.uk								

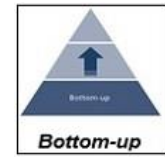


Marie Skłodowska Curie Actions (MSCA) Postdoctoral Fellowships (PF)

WHAT IS THE SCHEME ABOUT?

- Individual **career development/knowledge transfer** fellowships for **Postdoctoral researchers**
- Funds a research/training project that incorporates international mobility for researchers who have obtained a **PhD** or successfully defended their doctoral thesis and have a **maximum of 8 years full-time equivalent research experience**
- Postdoctoral Fellowships have two funding strands:
 - European Fellowship (EF)** for researchers of any nationality to undertake a fellowship within an EU Member State (MS) or Associated Country (AC).
 - Global Fellowship (GF)** for researchers meeting specific nationality/residency criteria, to spend 12-24 months in a non-associated Third Country, followed by a mandatory 12 months period in an EU Member State or AC.

MAIN CHARACTERISTICS



Unit cost budget funds:

- Living allowance** (€5990/month subject to country correction coefficient)
- Mobility allowance** (€710/month)
- Family allowance** (€660/month if eligible to claim)
- Long-term Leave Allowance** (EUR 6700x % covered by the beneficiary if eligible to claim)
- Special Needs Allowance** (Requested unit x 1/number of months if eligible to claim)
- Research, training & networking costs** (€1000/month)
- Management & indirect costs** (€650/month)



EF: 12-24 months
GF: 24-36 months



EF: €260-276K (24m)
GF: €390-414K (36m)

Next
deadline

[11th September 2024](#)

EU Team contact: eufunding@leeds.ac.uk

5. WHY YOU SHOULD APPLY

In 2020 Leeds had a success rate of 18.6% (compared to overall scheme success rate of 14%). These fellowships allow you to gain experience of EU funding and are 100% funded.

As supervisor:

- Offers opportunity to bring high quality researchers to Leeds
- Opens up collaboration opportunities

As Researcher:

- Transnational mobility
- Can focus 100% on research & training project
- Undertake career development training

Proposals need to satisfy the following criteria:

- High quality researcher relative to career stage
- Potential to deliver long term impact on researcher's career
- Significant EU/global level research impact
- Balanced combination of research and complementary skills training
- High quality supervisor and host organisation
- 2-way knowledge transfer opportunities

4. WHAT MAKES A COMPETITIVE PROPOSAL?

3. APPLICATION PROCESS

- Single stage electronic submission process
- 10 page application
- Resubmission restriction for proposals receiving a score of less than 70%

1. PROJECT IDEA

Project based on **any area of research** that moves forward the state-of-the-art in the field and provides:

- Research skills and knowledge training
- Complementary, career development skills training
- Knowledge transfer collaboration & networking opportunities

2. ELIGIBILITY CRITERIA

At the call deadline, the Postdoctoral Researcher must:

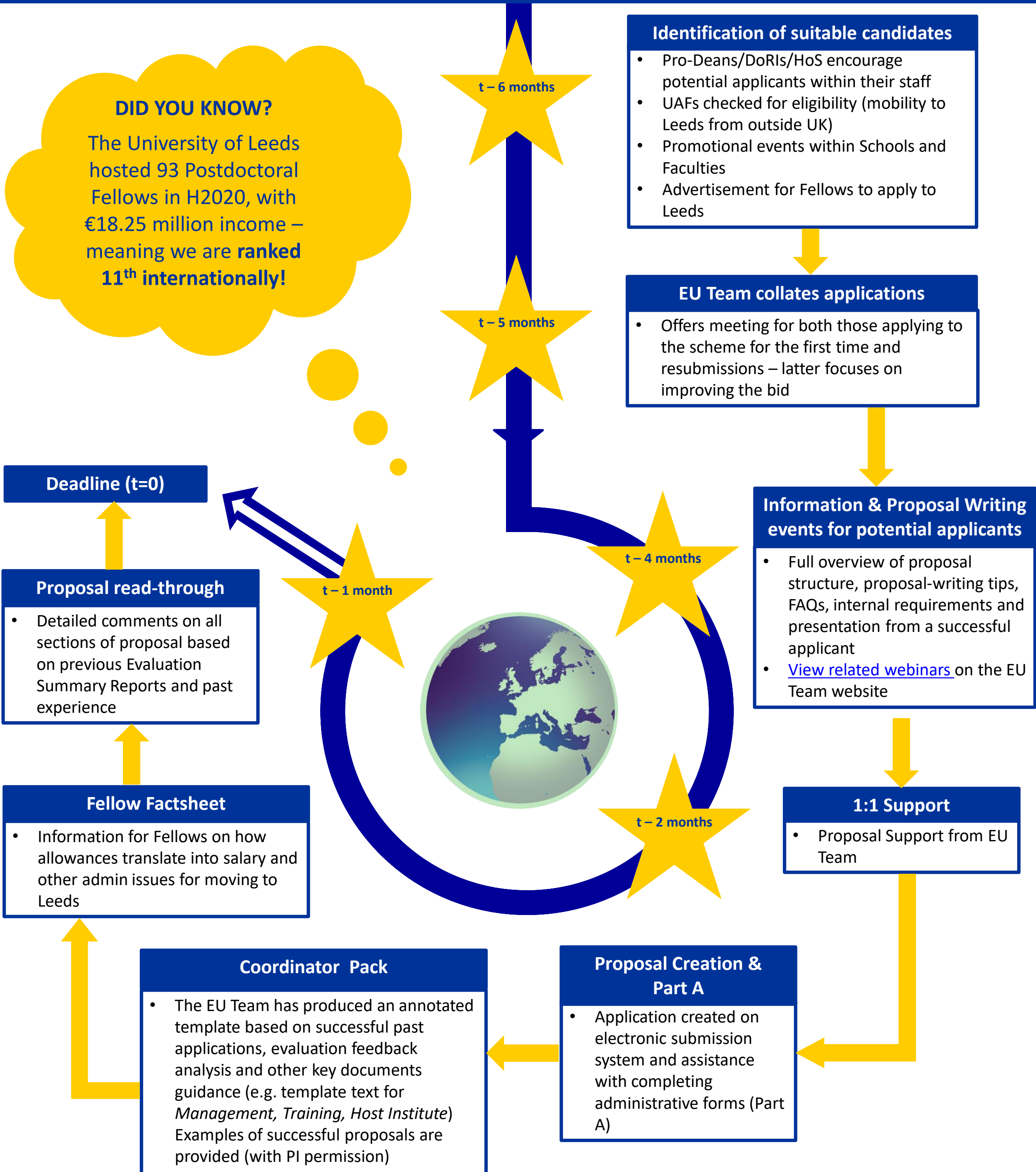
- Have a **PhD** or successfully defended their doctoral thesis
- Have a **maximum of 8 years** full-time equivalent research experience at the call deadline
- Meet mobility criteria: not have lived/worked in the country that hosts the fellowship for more than 12 months in the 36 months prior to the call deadline





MSCA POSTDOCTORAL FELLOWSHIPS SUPPORT

EU TEAM SUPPORT & TIMELINE



DID YOU KNOW?

The University of Leeds hosted 93 Postdoctoral Fellows in H2020, with €18.25 million income – meaning we are **ranked 11th internationally!**

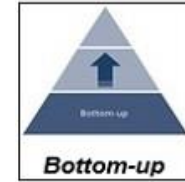


Marie Skłodowska Curie Actions (MSCA) Doctoral Networks (DN)

WHAT IS THE SCHEME ABOUT?

- Delivering research and complementary skills training for **doctoral candidates** (i.e. not already in possession of a doctoral degree at the date of the recruitment) within **international, interdisciplinary and inter-sectoral networks** that utilise/trial novel training delivery methods and mechanisms
- Leads to improved employability and career prospects for researchers within and outside academia
- Funds training for researchers of their research career via one of 3 network models:
 - Doctoral Networks (DN)**
 - Industrial Doctorates (DN-ID)**
 - Joint Doctorates (DN-JD)**

MAIN CHARACTERISTICS:

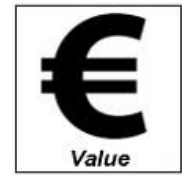


Unit cost budget funds:

- Living allowance** (€4010/person/month) subject to country correction coefficient
- Mobility allowance** (€710/person/month)
- Family allowance** (€660/person/month)
- Research, training & networking costs** (€1,600/person/month)
- Management & indirect costs** (€1,200/person/month)
- Number of Researchers:** Up to 540 person months (15 researchers at 36 months/Researcher)



48 months (DN/DN-ID)
60 months (DN-JD)



€3.7 - 4.5 m

Next
deadline

27th November 2024

EU Team contact: eufunding@leeds.ac.uk

5. WHY YOU SHOULD APPLY

- Funds PhD students:** potentially up to 5 per organisation
- Budget based on unit costs** - one of the easier EU funding streams to administer
- Helps **develop international, intersectoral, collaborative networks/contacts**
- Under Horizon 2020, Leeds is:
 - beneficiary in 30 ITN projects
 - coordinating 13 ITN projects
 - ranked 2nd in the UK for number of coordinated ITNs

1. PROJECT IDEA

Innovative doctoral training network based on **any area of research** that moves forward the state-of-the-art in the field and fosters a culture of **open science, innovation & entrepreneurship** within a new generation of researchers

4. WHAT MAKES A COMPETITIVE PROPOSAL?

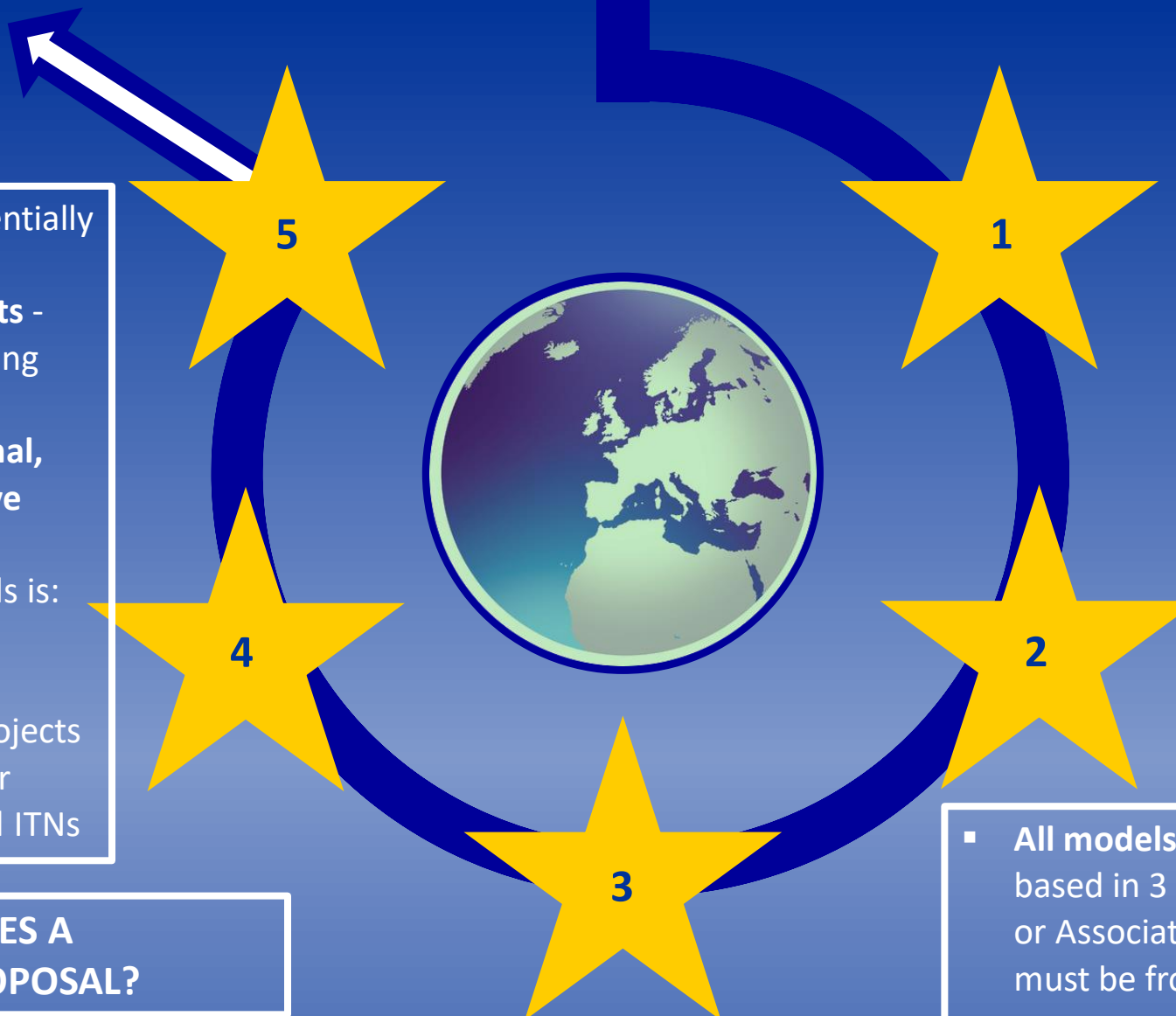
- Meaningful participation of non-academic sector
- Use of innovative training delivery methods
- Interdisciplinary/intersectoral secondment opportunities
- Significant EU/global level research impact
- Balanced combination of research & complementary skills training delivered by top quality organisations/individuals

3. APPLICATION PROCESS

- Single stage electronic submission
- 30 page application
- Resubmission restriction for proposals receiving a score of less than 80%

2. ELIGIBILITY CRITERIA

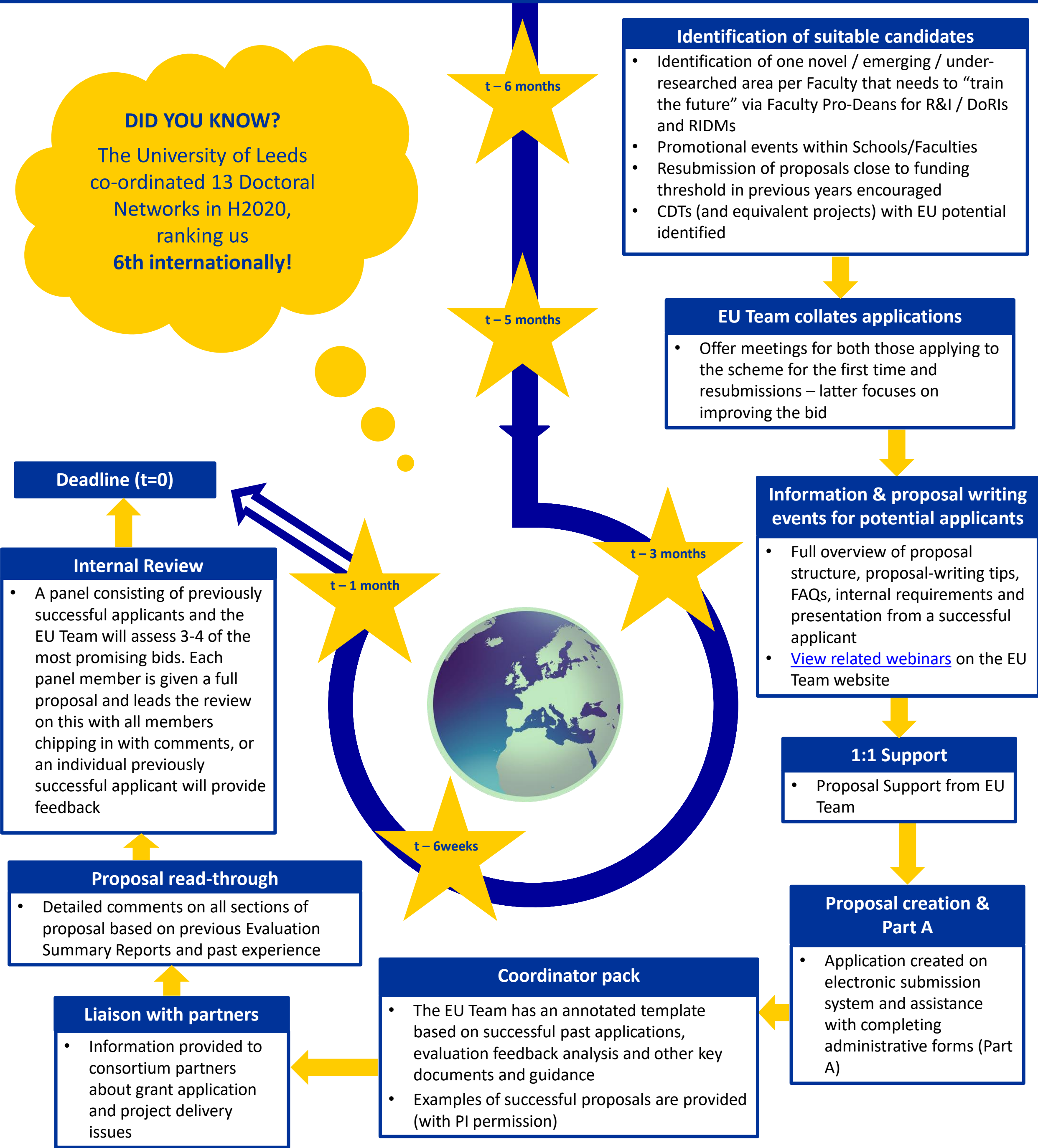
- All models:** Minimum of 3 organisations based in 3 different EU Member States (MS) or Associated Countries (AC). At least one must be from a MS.
- DN-ID:** At least one beneficiary must be from the academic sector and one from the non-academic sector. Researchers must spend min. 50% of their time seconded to non-academic sector organisation
- DN-JD:** At least **three independent legal entities** must be entitled to award doctoral degrees (at least one of them must be established in MS and/or AC)





MSCA DOCTORAL NETWORKS SUPPORT EU TEAM SUPPORT & TIMELINE

DID YOU KNOW?
The University of Leeds co-ordinated 13 Doctoral Networks in H2020, ranking us **6th internationally!**



Identification of suitable candidates

- Identification of one novel / emerging / under-researched area per Faculty that needs to “train the future” via Faculty Pro-Deans for R&I / DoRIs and RIDMs
- Promotional events within Schools/Faculties
- Resubmission of proposals close to funding threshold in previous years encouraged
- CDTs (and equivalent projects) with EU potential identified

EU Team collates applications

- Offer meetings for both those applying to the scheme for the first time and resubmissions – latter focuses on improving the bid

Information & proposal writing events for potential applicants

- Full overview of proposal structure, proposal-writing tips, FAQs, internal requirements and presentation from a successful applicant
- [View related webinars](#) on the EU Team website

1:1 Support

- Proposal Support from EU Team

Proposal creation & Part A

- Application created on electronic submission system and assistance with completing administrative forms (Part A)

Coordinator pack

- The EU Team has an annotated template based on successful past applications, evaluation feedback analysis and other key documents and guidance
- Examples of successful proposals are provided (with PI permission)

Liaison with partners

- Information provided to consortium partners about grant application and project delivery issues

Proposal read-through

- Detailed comments on all sections of proposal based on previous Evaluation Summary Reports and past experience

Internal Review

- A panel consisting of previously successful applicants and the EU Team will assess 3-4 of the most promising bids. Each panel member is given a full proposal and leads the review on this with all members chipping in with comments, or an individual previously successful applicant will provide feedback

Deadline (t=0)



ERC FACTSHEET

FELLOWSHIPS FOR FRONTIER RESEARCH

WHAT IS THE SCHEME ABOUT?

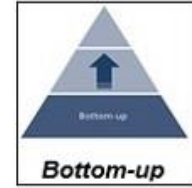
The ERC is looking to fund:

- Ambitious, paradigm shift research
- Highly rated Principal Investigators (PIs) in 3 categories:
 - Starting Grants:** 2-7 years post-PhD
 - Consolidator Grants:** 7-12 years post-PhD
 - Advanced Grants:** >12 years but usually professorial

ERC grants are:

- Bottom-up, PI-led research
- Impact is solely on advancing research knowledge
- Step-change to the state-of-the-art
- A research team, led by the PI and his/her research vision

MAIN CHARACTERISTICS



Bottom-up



Single Team



Step-change

The ERC is not looking for collaborations: all bids must be a single team with the PI leading the vision. The team can:

- comprise other academic staff but if more senior than the PI, they must not be seen to be providing leadership.
- be based at other institutions, but they are not collaborators, they are 'remote team members'

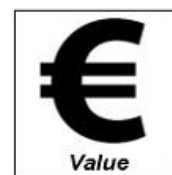
Budget (+possible extra €1m for large equipment/facilities access):

- **Starting Grants:** up to €1.5m over 5 years *pro rata*
- **Consolidator Grants:** up to €2m over 5 years *pro rata*
- **Advanced Grant:** up to €2.5m over 5 years *pro rata*



Duration

typically 5 years



Value

1.5 -2.5 million

EU Team contact: [Ben Williams](#)

Next deadlines

Starting: **Oct 2024 (tbc)**
Consolidator: **Dec 2024 (tbc)**
Advanced: **29th August 2024**

Watch the [ERC video](#)

1. PROJECT IDEA

- Any area except nuclear research
- Must provide a **step-change** to current state of knowledge

2. ELIGIBILITY CRITERIA

- Eligibility cut-off 1st Jan each year to determine category
- Date on PhD certificate used against this
- Must carry out at least 50% research in EU
- Must allocate a minimum amount of time to grant:
 - **Starter:** min. 50% each year
 - **Consolidator:** min. 40% each year
 - **Advanced:** min. 30% each year

5. WHY YOU SHOULD APPLY

- ERC allows you to design the research you want to do
- You can build a team of post-docs, PhDs etc.
- Flexibility in work plan and budget as project progresses
- Career-defining fellowships

4. WHAT MAKES A COMPETITIVE PROPOSAL

- Strong PI track record
- High risk-high reward research
- Ambitious research based on feasible reasoning
- Novel or unconventional methodology

3. APPLICATION PROCESS

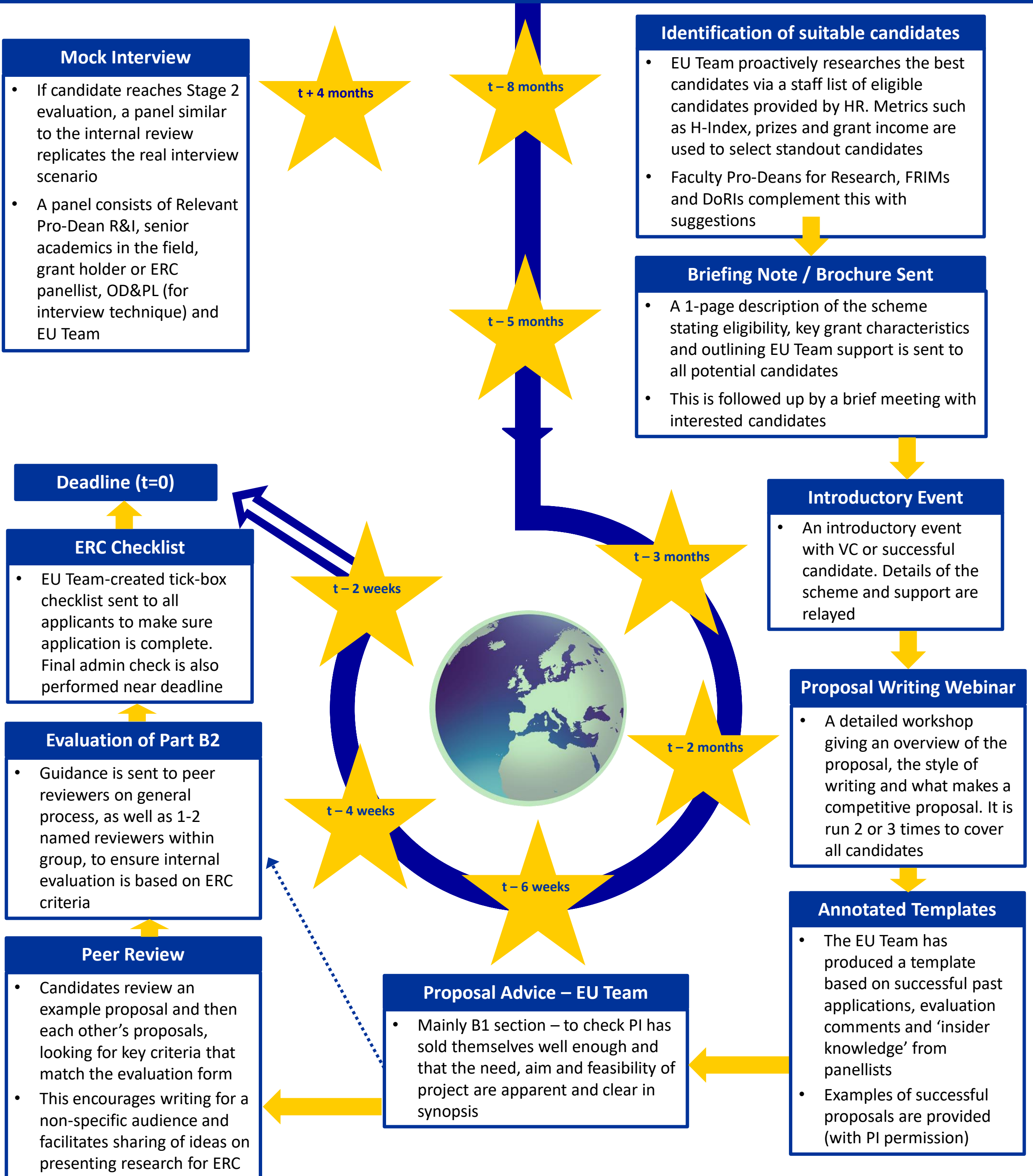
- One-stage submission, two-stage evaluation
- Two sections:
 - B1 - Synopsis, CV, Track Record (10 pages)
 - B2 - Full proposal (15 pages)
- Interview as part of stage 2 for all schemes
- Can only reapply next year if get to Stage 2
- Resubmission restrictions if you score: 'B' (1 year) or 'C' (2 years) at Stage 1





ERC SUPPORT

EU TEAM SUPPORT & TIMELINE





Global Challenges & European Industrial Competitiveness

Policy or industry-led collaborative research

WHAT IS THE SCHEME ABOUT?

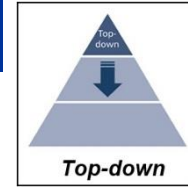
Collaborative projects to address Global Challenges in 6 Clusters:

- Cluster 1 [Health](#)
- Cluster 2 [Culture, Creativity and Inclusive Society](#)
- Cluster 3 [Civil Security for Society](#)
- Cluster 4 [Digital, Industry and Space](#)
- Cluster 5 [Climate, Energy and Mobility](#)
- Cluster 6 [Food, Bioeconomy, Natural Resources, Agriculture & Environment](#)

Next deadline

[Throughout the year](#)

MAIN CHARACTERISTICS



Funding for collaborative projects via:

- **Research & Innovation Actions (RIAs)**
- **Innovation Actions (IAs)**
Call topics are positioned along the scale from research to market, with a strong focus on **innovation-related** activities, such as pilots and demonstrations.
- **Coordination and Support Actions (CSA)** fund accompanying activities such as networking, road mapping, training and capacity building and policy/advisory work.



3-5 years



Typically 4-6, but up to 15 million

EU Team contact: eufunding@leeds.ac.uk

5. WHY YOU SHOULD APPLY

- Opportunities to/for:
- be either **partner** or **coordinator** depending on experience
 - be part of an interdisciplinary and international consortium
 - develop **solutions for Europe's biggest societal challenges**
 - form or strengthen existing links with **non-academic partners**
 - receive **bespoke support** available from proposal writing through to post-award management

4. WHAT MAKES A COMPETITIVE PROPOSAL

- For **RIAs**: proposals are evaluated equally on the **'Excellence', 'Impact' and 'Implementation'** sections so careful attention must be given to **all three**
- For **IAs**: the **Impact** criterion carries a higher weighting
- Clear **end-user engagement** and **real-world application** as well as plans to **exploit and communicate** research outputs to a broad audience
- Commitment to **gender equality, open science and responsible R&I**

3. APPLICATION PROCESS

- Deadlines throughout the year depending on the calls
- Submissions either 1- or 2-stage
- Online submission via the Research Participant portal
- 45-page proposal for RIA/IA, 30 for CSA
- 10 pages if first stage of a two-stage proposal

1. PROJECT IDEA

- Calls are **top-down**, with specific topics and a list of 'expected impacts' which must be addressed in the proposal
- Typically supports multi-actor approach – multi-discipline and cross-sector approach

2. ELIGIBILITY CRITERIA

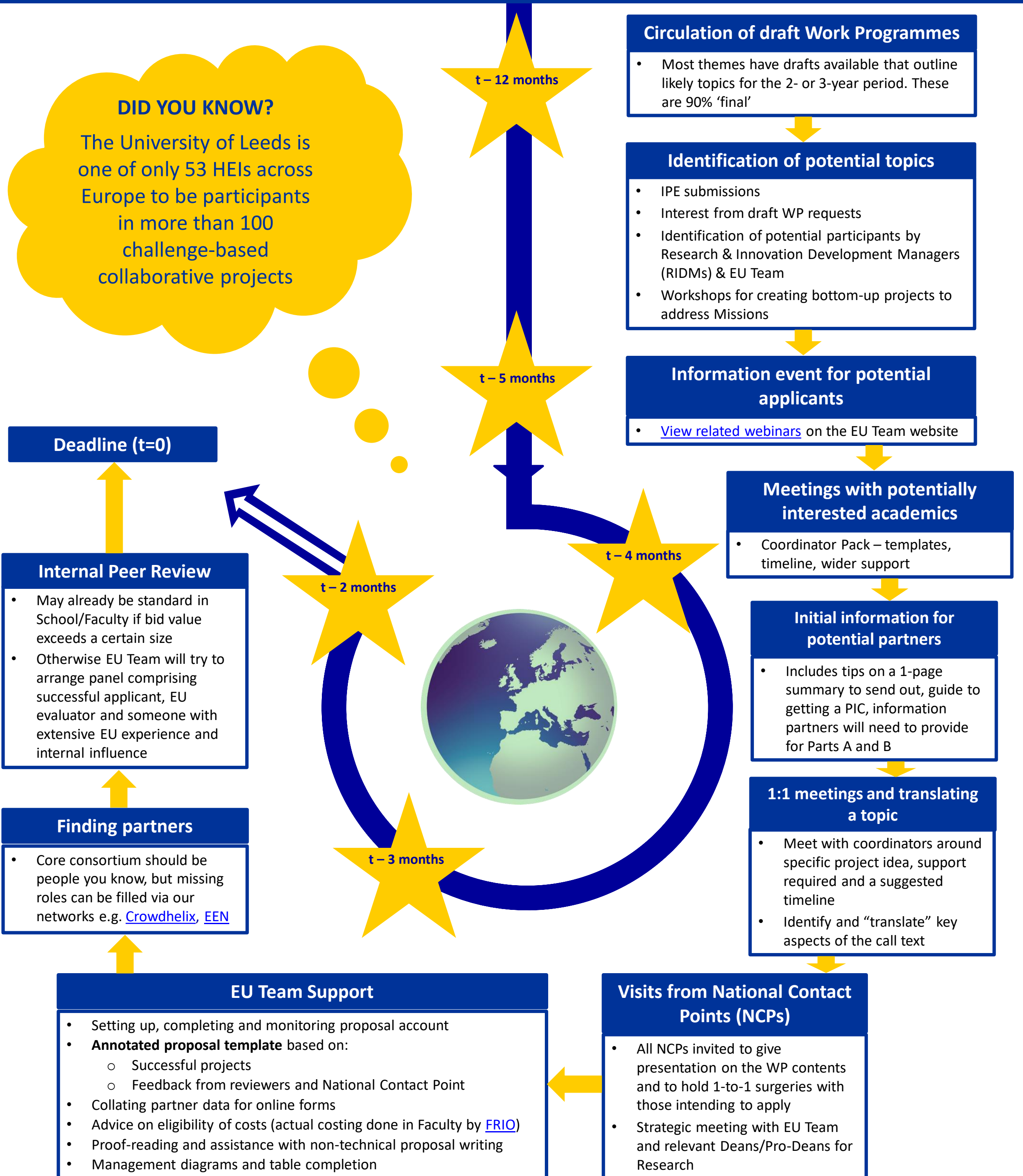
- At least 3 partners from 3 different Member State (MS) or Associated Countries with one being based in a MS (occasional exception for CSA projects)
- Third Country partner(s) can participate if necessary and justified but may not be automatically funded (unless a Low and Middle Income Country (LMIC) (excluding BRIC nations and Mexico))





Global Challenges & European Industrial Competitiveness

Support for Leeds-Coordinated Collaborative Projects





EIC Pathfinder Open, Challenges & EIC Transition Open

Innovative Research to support market-creating breakthroughs

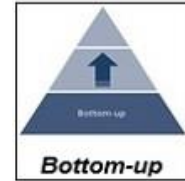
WHAT IS THE SCHEME ABOUT?

The EIC fosters innovation via radical high risk/high gain or even disruptive tech solutions. It covers the process from early concept to market readiness, though always in the context of a long-term plan to implement a solution.

- **Pathfinder Open:** High risk/high reward tech solutions in any tech area
- **Pathfinder Challenges:** High risk/high reward tech solutions in 5 areas:
 - Solar-to-X Devices
 - Towards cement and concrete as a carbon sink
 - Nature inspired alternatives for food packaging/films
 - Nanoelectronics for energy-efficient smart edge devices
 - Strengthening the sustainability and resilience of EU space infrastructure.

Transition open: Follow-on funding to take a Pathfinder or ERC Proof-of-Concept project towards market readiness.

MAIN CHARACTERISTICS



Pathfinder Open / Challenges: typically 3 years
Transition Open: 18-24 months



Pathfinder Open c.€3m
Pathfinder Challenges c.€4m
Transition Open €2.5

Next deadline

Pathfinder Open: **March 2025 (tbc)**
Pathfinder Challenges: **16th October 2024**
Transition Open: **18th September 2024**

EU Team contact: eufunding@leeds.ac.uk

WHY YOU SHOULD APPLY

- **Pathfinder:** chance to lead a hi-tech project of your design with a view to future market uptake or **Transition:** chance to develop your results towards commercialisation
- Allows much more risk and ambition than traditional EU schemes
- Smaller consortia (4-6 partners typical)
- Chance to resubmit based on previous feedback, yearly deadlines

WHAT MAKES A PROPOSAL COMPETITIVE

- Pathfinder:**
- Radical new technological vision, not novel use of existing tech
 - Addressing the Gatekeepers : Radical vision; Science-towards-technology breakthrough; High-risk/high-gain, objective-oriented approach & methodology
 - Consortium that includes early career researchers & tech SMEs
 - Long-term plan for exploitation
- Transition:**
- Basis in a Pathfinder or ERC PoC project that has generated excellent results
 - Clear plan for market uptake

1. PROJECT IDEA

- **Pathfinder:** Radical technological breakthrough or disruptive innovation
- **Transition:** Plan for market-readiness (and longer-term exploitation) based on a successful Pathfinder or ERC Proof of Concept (PoC) project

2. ELIGIBILITY CRITERIA

- **Pathfinder:** Consortia featuring at least 3 partners from 3 different Member States or Associated Countries, with at least 1 partner from a Member State
- **Transition Open:** can also be mono-beneficiary. Must relate to a project that has been live for at least 12 months or has been completed within 24 months as of deadline

3. APPLICATION PROCESS

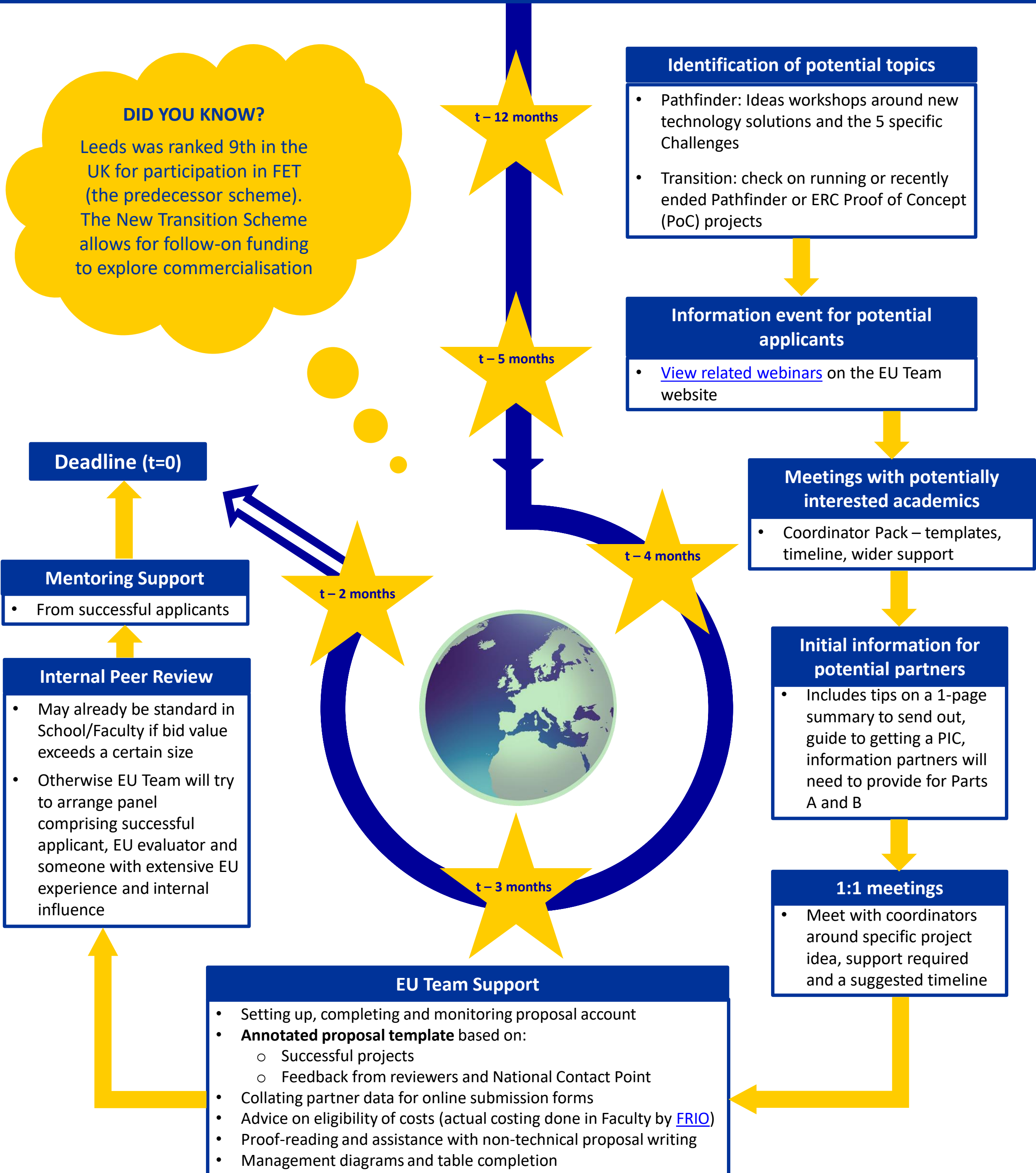
- Proposal size: **Pathfinder** - 17 page max. ; **Transition** - 25 page max.
- Online submission via the [Funding & Tenders Portal](#)
- Annual deadlines, sometimes >1 per year





EIC Pathfinder Open, Challenges & EIC Transition Open

Support for Leeds-Coordinated EIC proposals





EU Post Award

Support available for managing your EC funded project

With the introduction of a another new financial regime in Horizon Europe, it is crucial that the University has the necessary support systems in place to help academics successfully manage their EC funded projects.



Working alongside the EU pre-award team, we provide financial support to academics and Faculty Research and Innovation Offices for the duration of their Horizon Europe project.

We ensure that University systems and processes are compatible with the EC rules and regulations and provide the necessary training to academics and support staff across the University.



MAIN CONTACTS

Keri Dunning K.L.Dunning@leeds.ac.uk

- Supervises EU post award team
- Responsible for post award systems and processes
- Provides training for academic/support staff
- Provides post award support to the following Faculties:
 - ENV
 - EPS (ENG)
 - LUBS

Martika Cawley M.Cawley1@leeds.ac.uk

- Provides post award support to the following Faculties:
- AHC
 - EPS (MAPS)
 - FBS
 - FMH
 - FSS

ADDITIONAL SUPPORT

- Presentation at consortium Kick Off meeting for Leeds-coordinated projects
- Collation of partner financial reports on Leeds-coordinated projects
- Manage audits conducted by the Commission or the European Court of Auditors
- Marie Curie support – exchange rate management, contractual issues, allowance reconciliations
- Grant amendments
- Training for academics and support staff

BUDGETING

- Update KRISTAL phase 2 so budget reports are accurate
- Forecast expected exchange rate gains/losses

REPORTING

- Prepare and submit financial reports
- Arrange and manage external audits
- Support with EC portal - SYGMA

AWARD SET UP

- Support with KRISTAL set up and award approval
- Arrange and chair internal Kick Off meeting
- Allocate project income
- Support for HR with regard to Marie Curie employment contracts

PROJECT MANAGEMENT

- Advice regarding EC rules and regulations and project specific queries
- Guidance documents on completing timesheets and calculating salary costs
- Advice regarding Euro to GBP exchange rates
- Systems and processes guidance
- Close down of project accounts

